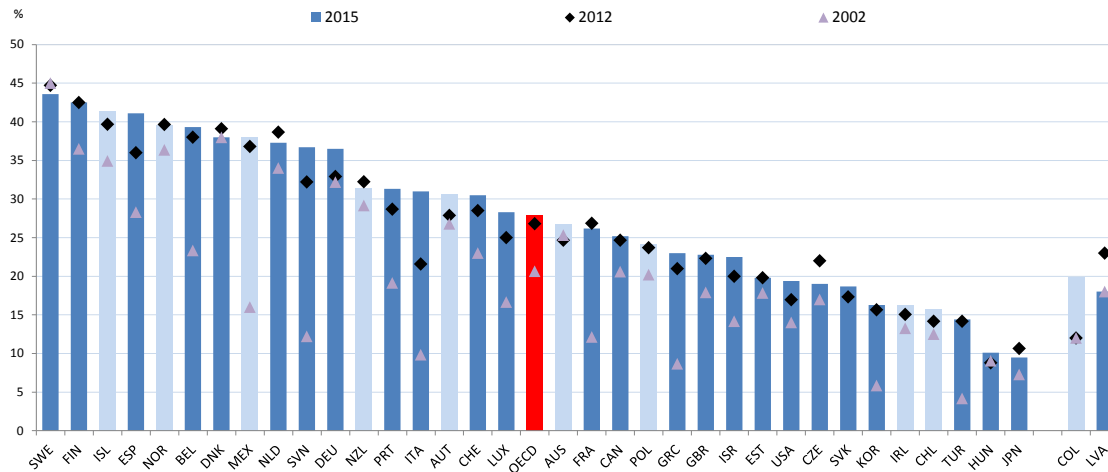


3.5 Share of women parliamentarians and legislated gender quotas

Lower or single house of Parliament



Source: Inter-Parliamentary Union (IPU) *PARLINE* (database), and IDEA Quota Project (database).

Bars in light blue represent countries with lower or single house parliaments with legislated candidate quotas as of 21 January, 2013.

Data refer to share of women parliamentarians recorded as of 1 February 2015, 31 October 2012 and 25 October 2002. Percentages represent the number of women parliamentarians as a share of total filled seats. 2002 data for the Slovak Republic are unavailable.

Information on data for Israel: <http://dx.doi.org/10.1787/888932315602>.

	2015	2012	2002
SWE	43,6	44,7	45,0
FIN	42,5	42,5	36,5
ISL	41,3	39,7	34,9
ESP	41,1	36,0	28,3
NOR	39,6	39,6	36,4
BEL	39,3	38,0	23,3
DNK	38	39,1	38,0
MEX	38	36,8	16,0
NLD	37,3	38,7	34,0
SVN	36,7	32,2	12,2
DEU	36,5	32,9	32,2
NZL	31,4	32,2	29,2
PRT	31,3	28,7	19,1
ITA	31	21,6	9,8
AUT	30,6	27,9	26,8
CHE	30,5	28,5	23,0
LUX	28,3	25,0	16,7
OECD	27,847	26,8	20,6
AUS	26,7	24,7	25,3
FRA	26,2	26,9	12,1
CAN	25,2	24,7	20,6
POL	24,1	23,7	20,2
GRC	23	21,0	8,7
GBR	22,8	22,3	17,9
ISR	22,5	20,0	14,2
EST	19,8	19,8	17,8
USA	19,4	17,0	14,0
CZE	19	22,0	17,0
SVK	18,7	17,3	
KOR	16,3	15,7	5,9
IRL	16,3	15,1	13,3
CHL	15,8	14,2	12,5
TUR	14,4	14,2	4,2
HUN	10,1	8,8	9,1
JPN	9,5	10,6	7,3
COL	19,9	12,0	12,0
LVA	18	23,0	18,0